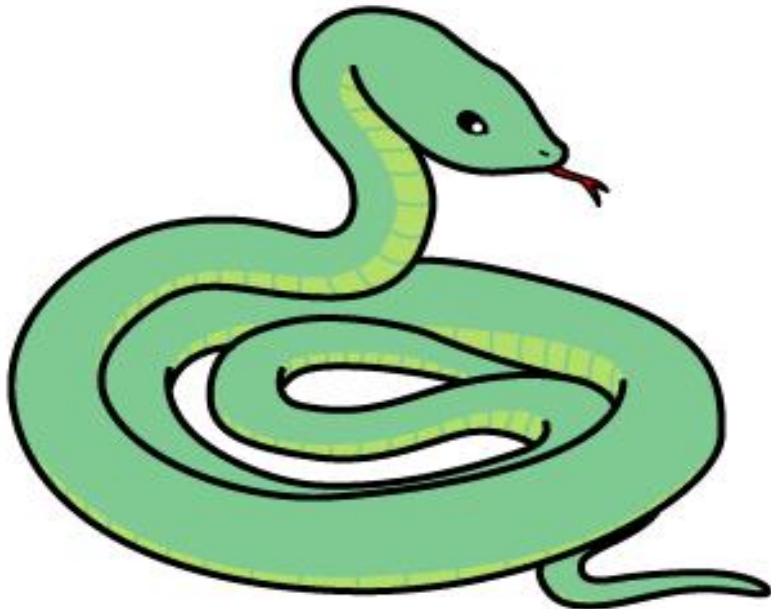


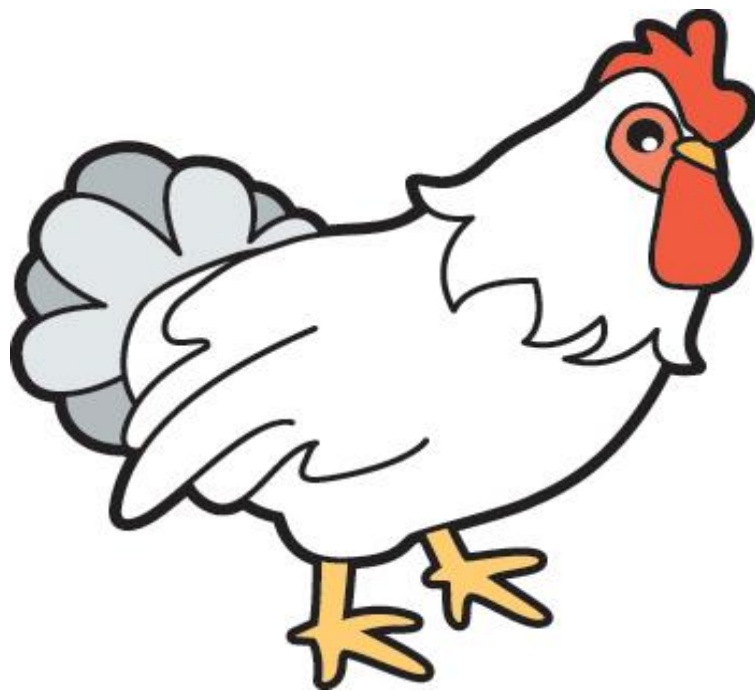
ນົກແຫຼວ



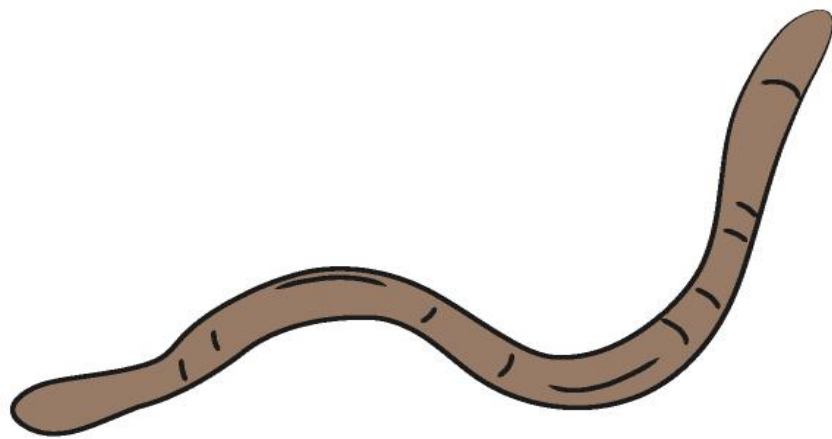
ສາ



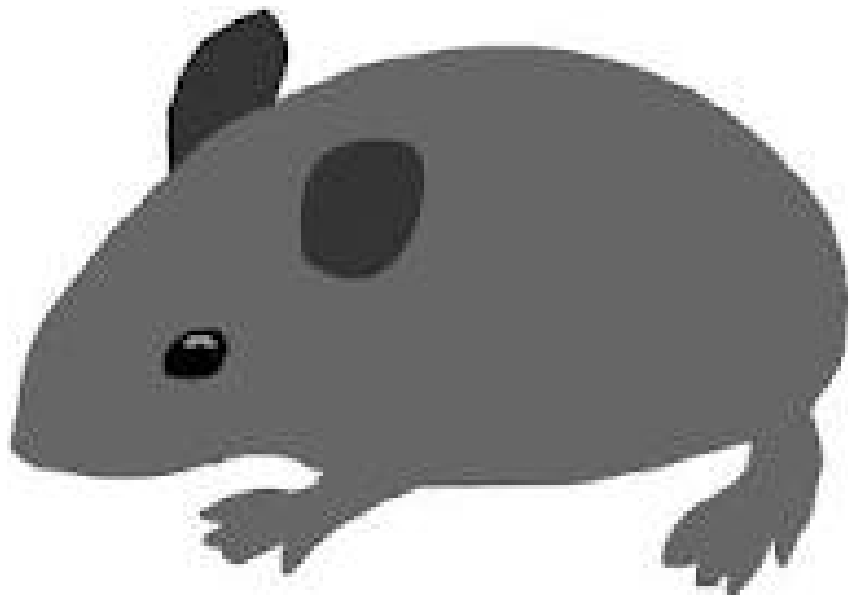
ກົບ



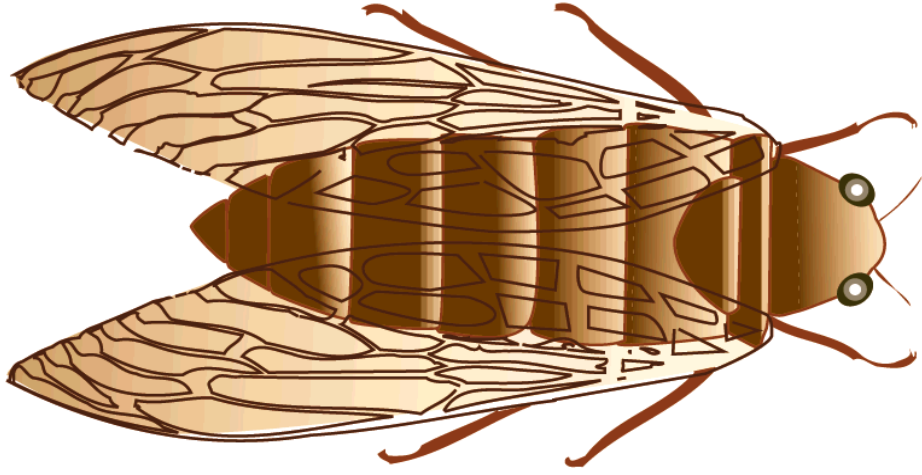
ໄກ່



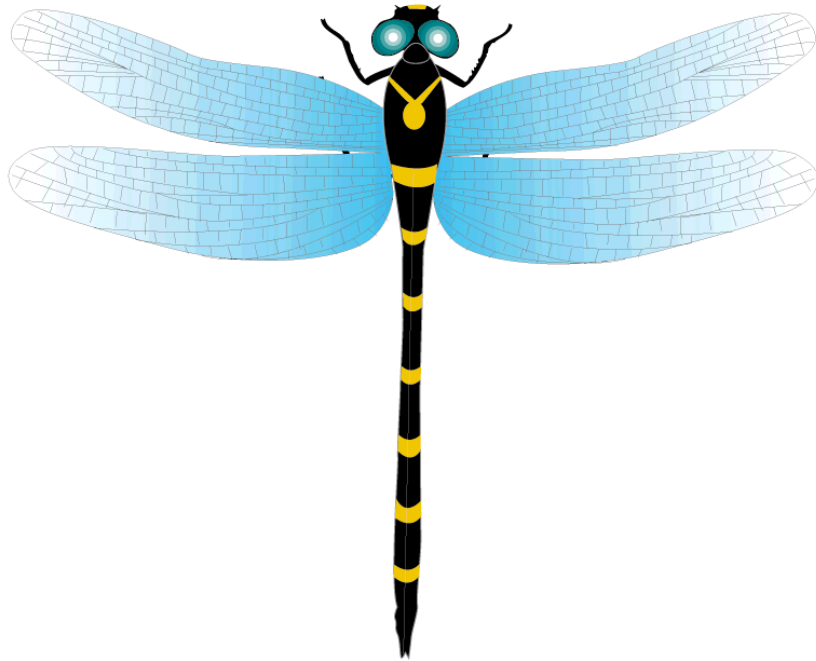
ຂີ້ກະເດືອນ



ໝູ



ຈັກຈັນ



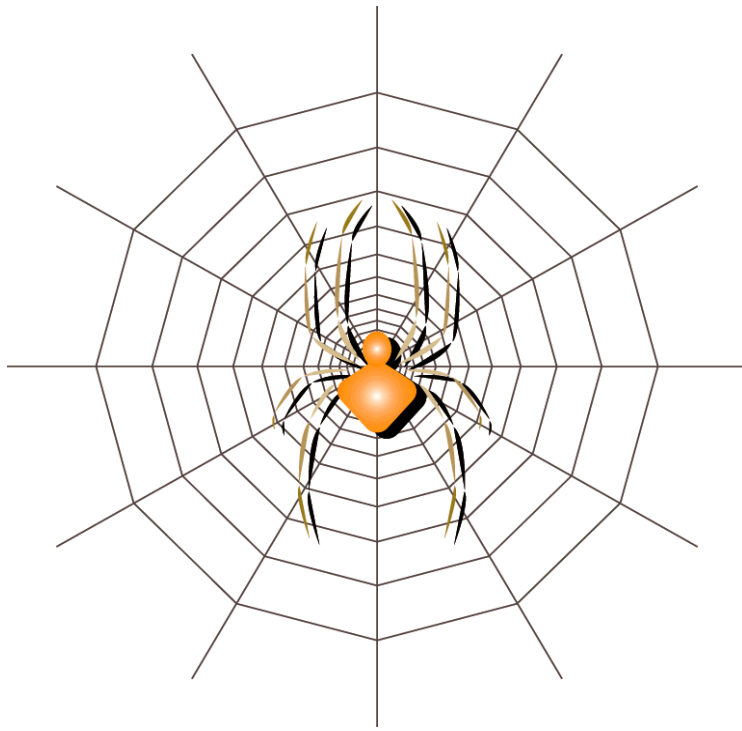
ແມງກະປິ່



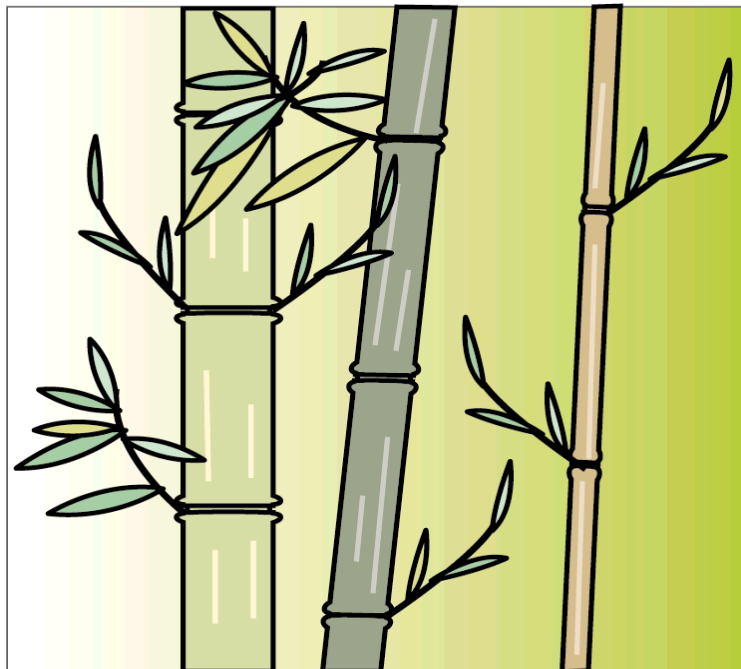
ໝິດ



ແມງກະເບື້ອ



ແມງມຸມ



ໄມ້ໄຜ່



ດອກໄມ້



ຕົ້ນເຂົ້າ

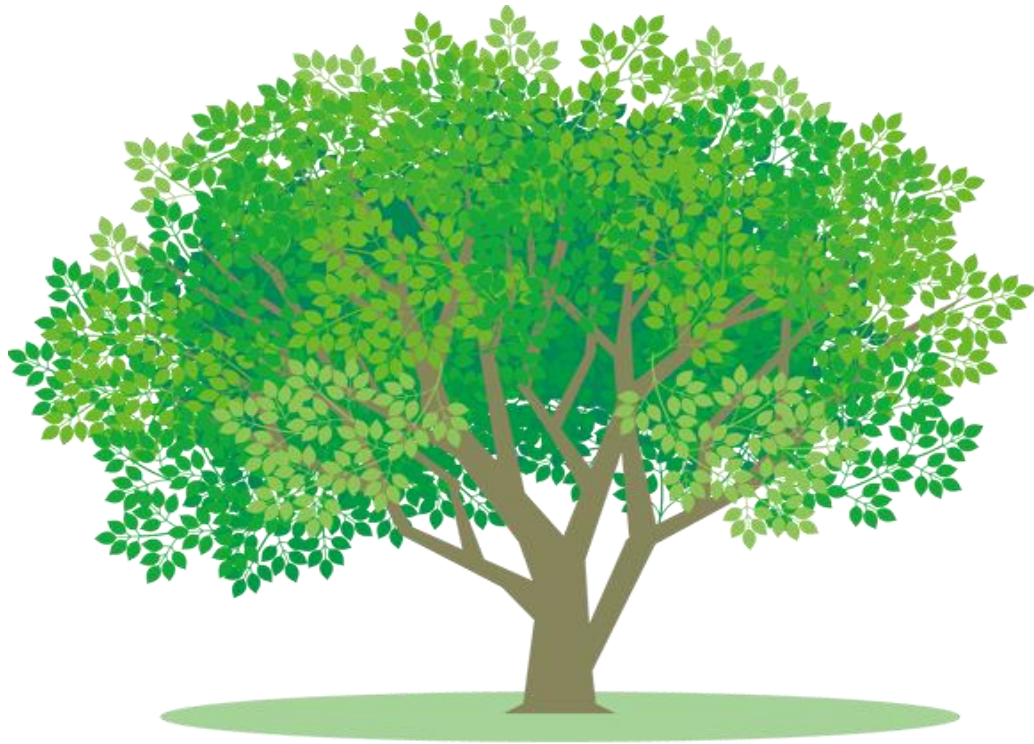


ໝາກໂມ

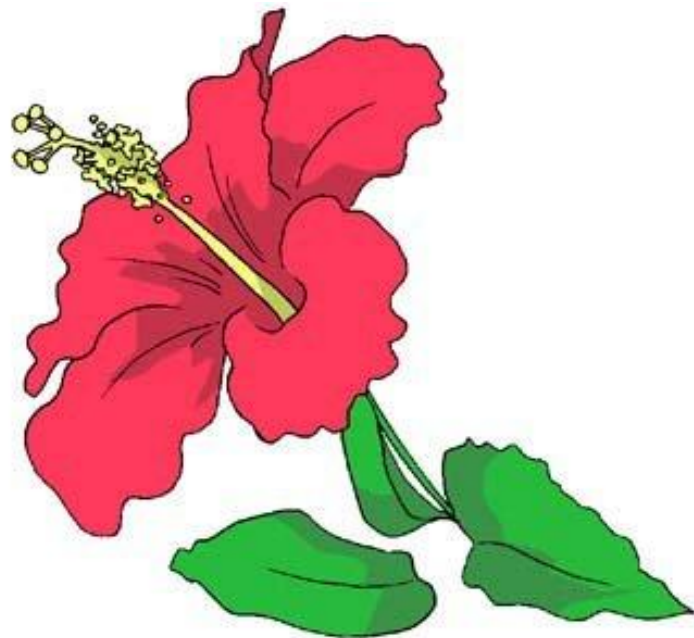


ເຂັດ





ຕົ້ນໄມ້



ດອກໄມ້